



JANA AYMAN

AHMED-CV

Student of interior architecture and design

ABOUT ME

I am an Interior Architecture and Design student who is passionate about transforming spaces into functional and aesthetically pleasing environments. I believe every design should blend creativity with practicality while reflecting a story unique to each space. My attention to detail, sustainability focus, and love for blending modern and historical elements drive my designs. My goal is to create spaces that inspire and bring comfort to those who experience them. I am eager to further develop my skills and gain practical experience through an internship at Savills, where I can contribute creatively while learning from professionals in the field. I am eager to continue growing and applying my creativity to meaningful design projects.

EDUCATION

- **Griffith College, Dublin, Ireland** *Bachelors Degree in Interior Architecture and Design* 2023 -Present
- **Al Zuhour Private School, Dubai, UAE** 2021-2023
- **American International School, Dubai, UAE** -2019 -2021

EXPERIENCE - ACHIEVEMENTS

Summer Intern - Interior Design

AE7 Morse, Dubai (Summer 2023)

- Assisted with design development, creating sketches, and preparing design concepts. Collaborated with teams on project planning and space optimization. Gained hands-on experience in material selection and sustainable design solutions. Supported the creation of client presentations and design documentation.

Kube showroom, long mile road, Ireland (summer 2025)

- Interior Design Intern, KURE Showroom, Long Mile Road, Dublin – Completed a one-month summer internship assisting with interior design projects, collaborating with the team on showroom layouts, client presentations, and day-to-day project tasks.

Public Speaking and Communication

- Delivered a French speech at my 2023 graduation ceremony, showcasing adaptability and dedication by learning it by heart despite not being fluent.

CONTACT

- ☎ +353 858830133
- ✉ Janaayman1122@gmail.com
- 📍 Dawson house, Patrick street, Dublin 8

NATIONALITY

Egyptian

LANGUAGE

English

Arabic

PORTFOLIO LINK

https://www.canva.com/design/DAGfTHDNlgs/4YB1qOXJ2HLJE50w1mgsuQ/edit?utm_content=DAGfTHDNlgs&utm_campaign=designshare&utm_medium=link2&utm_source=sharebutton

SOFTWARE SKILLS

- Autocad
- Photoshop
- Illustrator
- Indesign
- Revit
- Enscape
- SketchUP

SOFT SKILLS

- Drafting & Technical Skills Ergonomics
- Eye for detail
- Collaboration & Teamwork
- Sustainable Design
- Public Speaking
- Time Management
- problem solving
- decision making
- Critical Thinking

Ulster Bank

Year 3

Assignment crit 1-Group

Crit 2-Individual

Project Description

The A1C1 group project was completed with the redesign of the old Ulster Bank building for a boutique hotel and was functional and nice looking. The team performed site analysis, research, and documentation through CAD drawings, sketches, and photography in Phase-1. Phase 2 individually, was more about developing interior design concept including spatial planning, FFE, and RCP. All public spaces were a collective design effort, while different bedrooms thought proposed by each student. The project's final outcome was expressed through the mood and typology boards, a 3D model and rendered images conveying the design.

1

THE LIVING MUSEUM Boutique HOTEL

The Living Museum - A Transformation



Project Description

Utilize an existing building in Blessington as a small hotel.

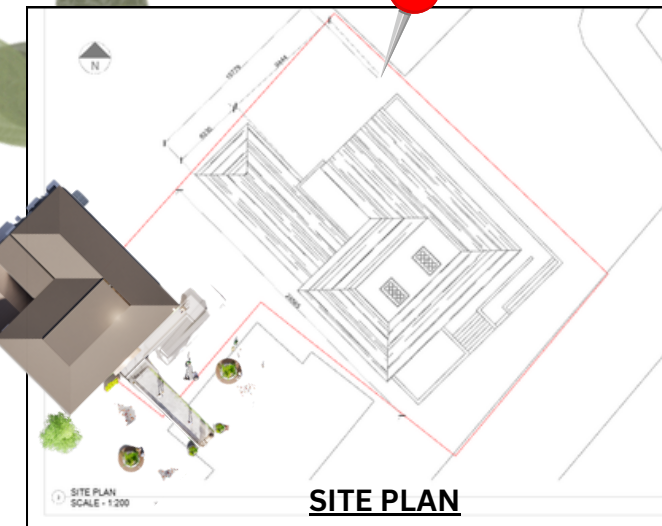
Adding guest rooms and a café/restaurant/bar for guest and public use.

Provide a premium customer service experience.

The design should include elements from the Irish culture, tradition, and environment.

History and architectural design should also be considered when designing.

It is important to try to positively impact the town, the tourists, and the community.



SITE PLAN
SCALE: 1:200



SITE MAP



West Elevation
Scale: 1:100



South Elevation
Scale: 1:100



South Elevation
Scale: 1:100



East Elevation
Scale: 1:100



Long-Section
Scale: 1:100



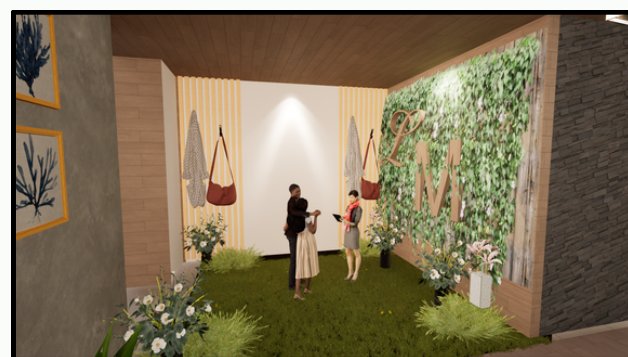
Cross-Section
Scale: 1:100



RESTAURANT



EVENT SPACE



ENTRANCE



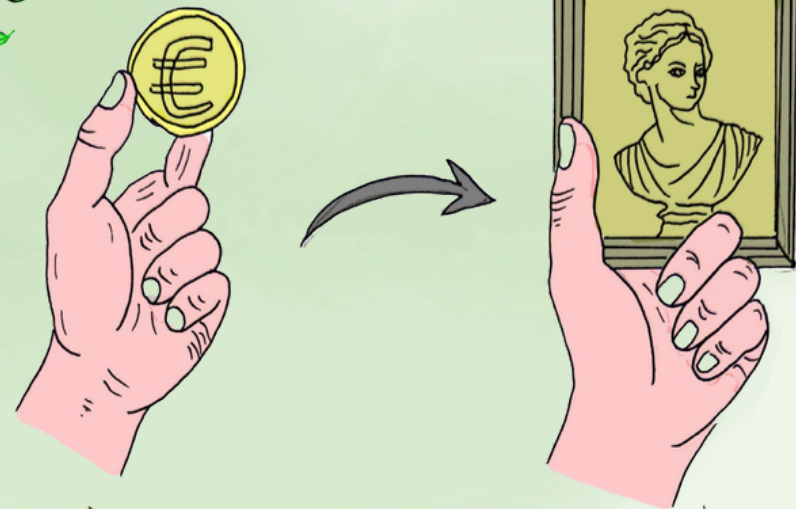
BATHROOM



RCP PLAN



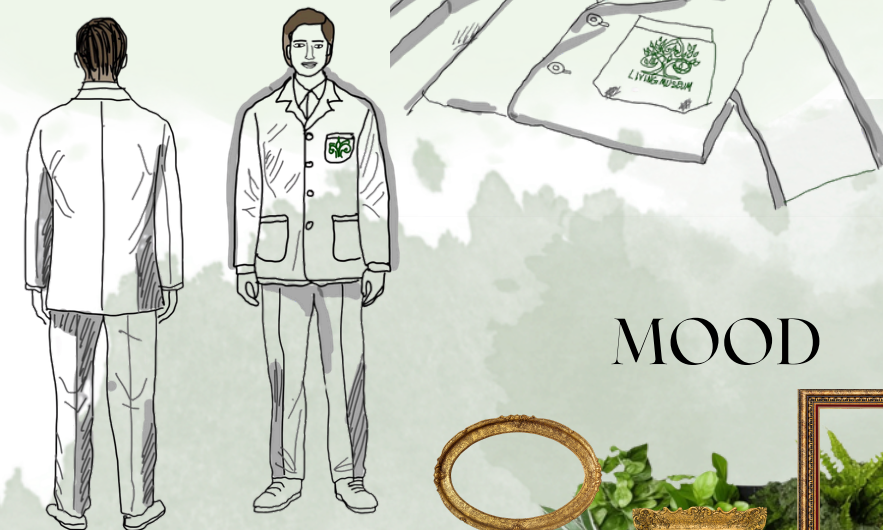
Ground floor plan
Scale: 1:100



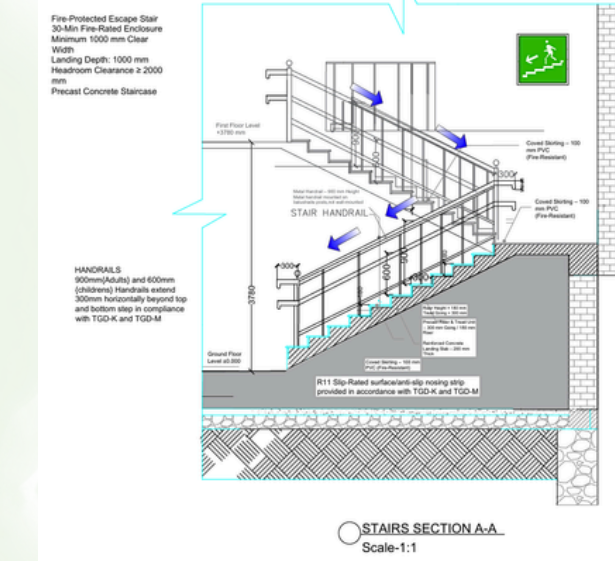
CONCEPT DEVELOPMENT

Transforming a bank to a cultural exchange of Irish history and nature inspired

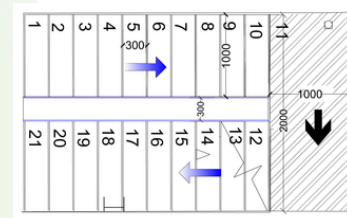
UNIFORM



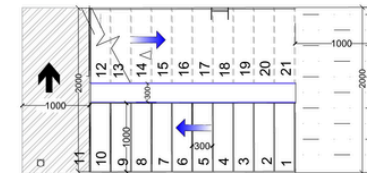
MOOD



STAIRS SECTION A-A
Scale:1:1



STAIRS First floor plan
Scale:1:1



STAIRS Ground floor plan
Scale:1:1

Fire Stairs



ENVIRONMENTAL APPROACH



Back-ISOMETRIC

Daylight and Indoor Outdoor Connection

This is the kind of diagram that illustrates the relationship between the interior of the room and the landscape on the outside. The interior design of the room is designed such that the colors of nature are incorporated to reduce the need for artificial lighting and artificial colors on the interior of the room.

- Environmental Benefit:
- Need for artificial light is reduced
 - reduced use of fake or synthetic decorative materials
 - improved wellbeing associated with viewing nature indoors



Model Making

BEDROOM FURNITURE



First floor plan
Scale:1:100

Hope Warehouse -Office Design

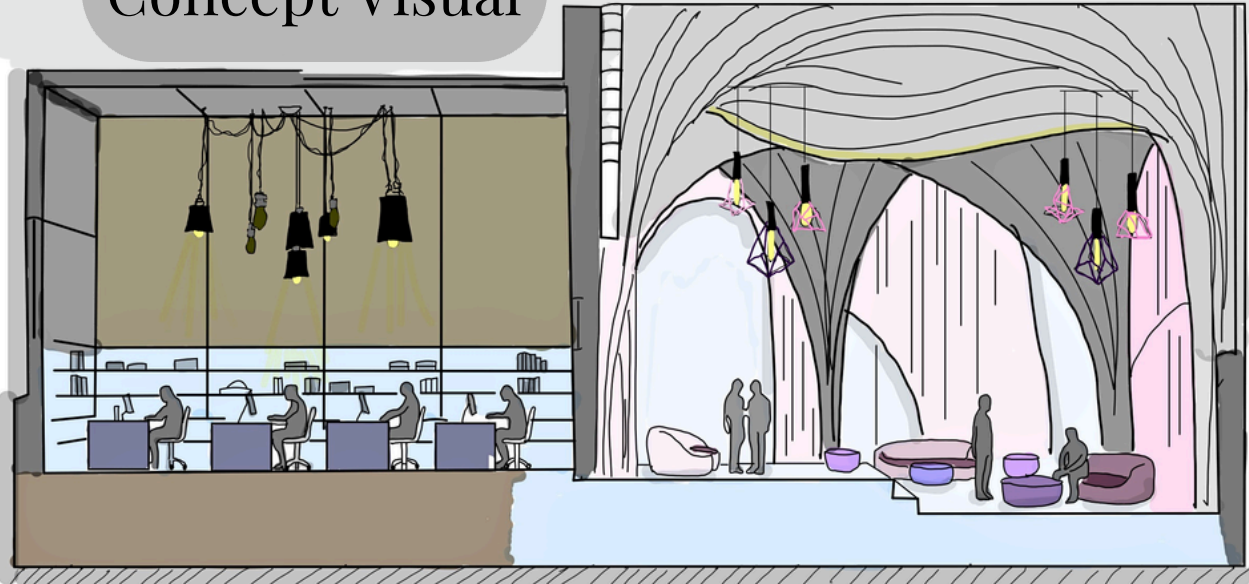
Year 3

2

Project Description

The project brief was to redesign a warehouse in Howth Junction Business Park into a collaborative workspace for the Hope Brewery community. It needed to support 20 designers from different fields, with spaces like studios, meeting rooms, breakout areas, and essential facilities. The design focused on encouraging creativity, collaboration, flexibility, accessibility, and sustainability.

Concept Visual



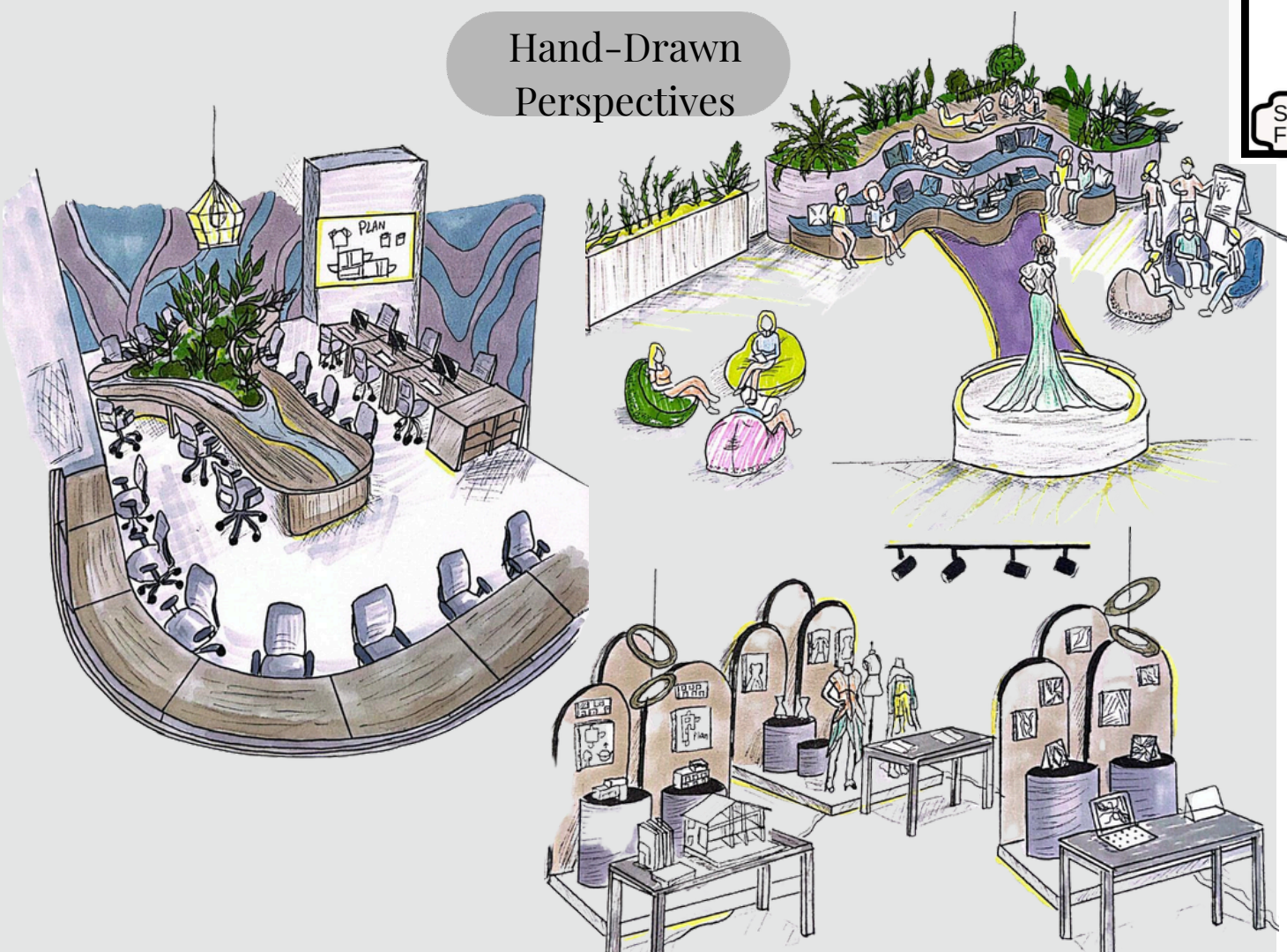
MIND

Concept

Heart

The concept and inspiration is based on the assumption that good creative work requires focus as well as connection. Most of each unit is created as a quiet work space that allows designers to focus, think clearly, and work efficiently known as the mind. However, there is a space inside the units, known as the heart, in which designers are connected. This space is more relaxed and invites designers to work together, converse, and share ideas among themselves. This way, the designers are able to move between working together and working separately, creating a balanced work environment.

Hand-Drawn Perspectives



Spatial Planning Ground Floor Plan

Plans



Spatial Planning First Floor Plan

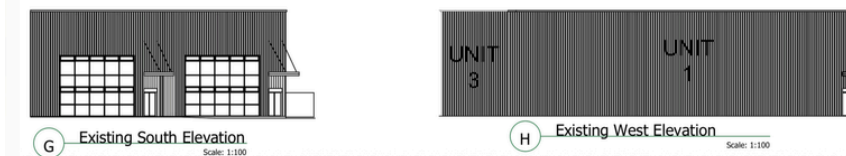
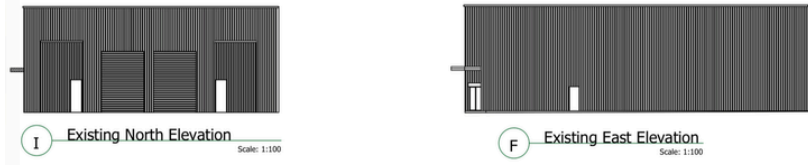
Logo



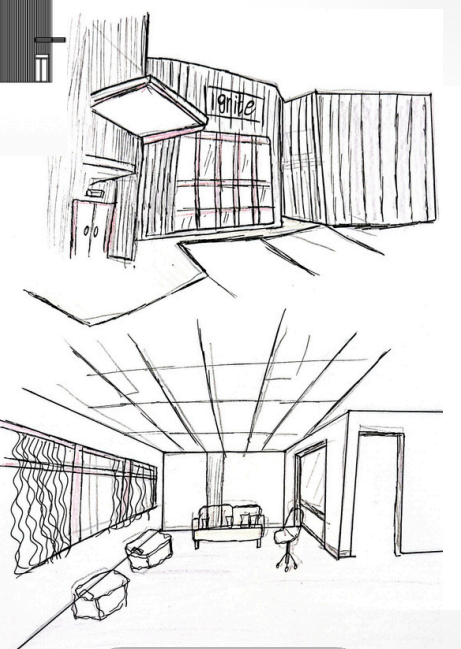
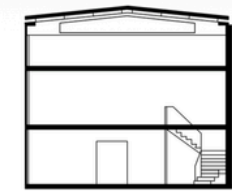
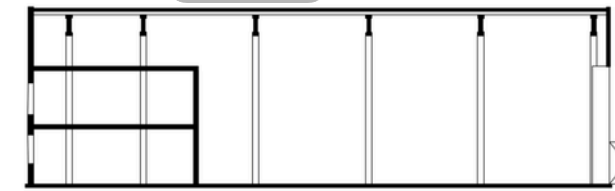
Concept board



Concept Model



Technical drawings



Site sketches

KUBE showroom

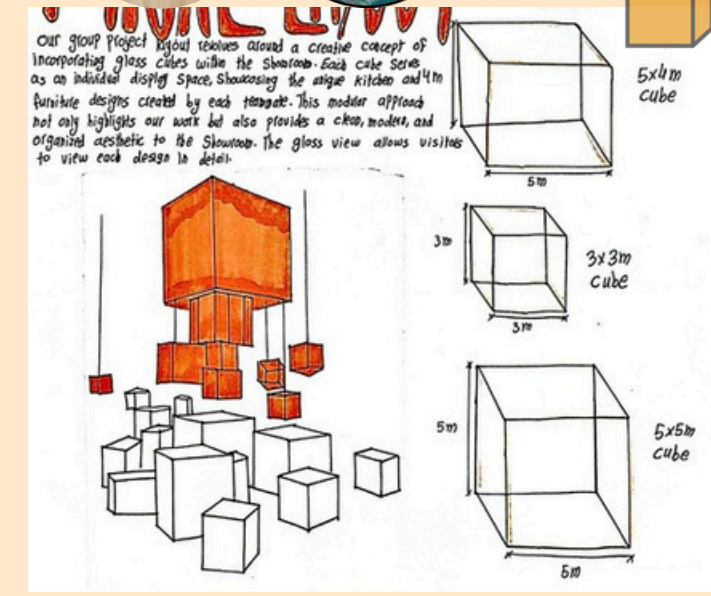
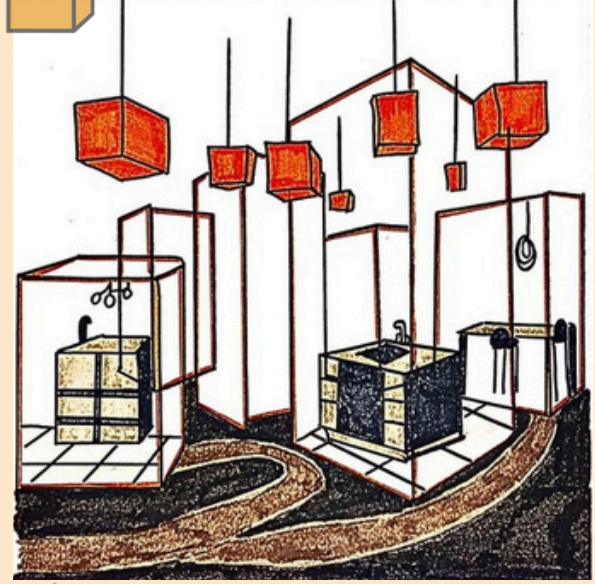
3

Year 2
Assignment crit 1-Group
Crit 2-Individual

Project Description

This was a group project where we redesigned the Kube Showroom to improve its layout, functionality, and overall look. As a team, we developed concepts and planned the space to create a modern showroom. My individual role included designing two kitchen layouts, creating custom furniture (including a reception desk), and producing detailed elevation drawings.

Layout

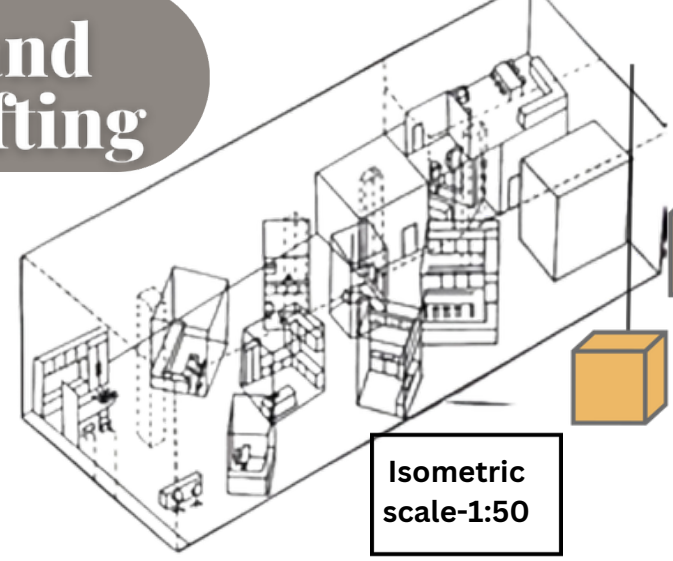


Our group project layout revolves around a creative concept of incorporating glass cubes within the showroom. Each cube serves as an individual display space, showcasing the unique kitchen and furniture designs created by each member. This modular approach not only highlights our work but also provides a clean, modern, and organized aesthetic to the showroom. The glass view allows visitors to view each design in detail.

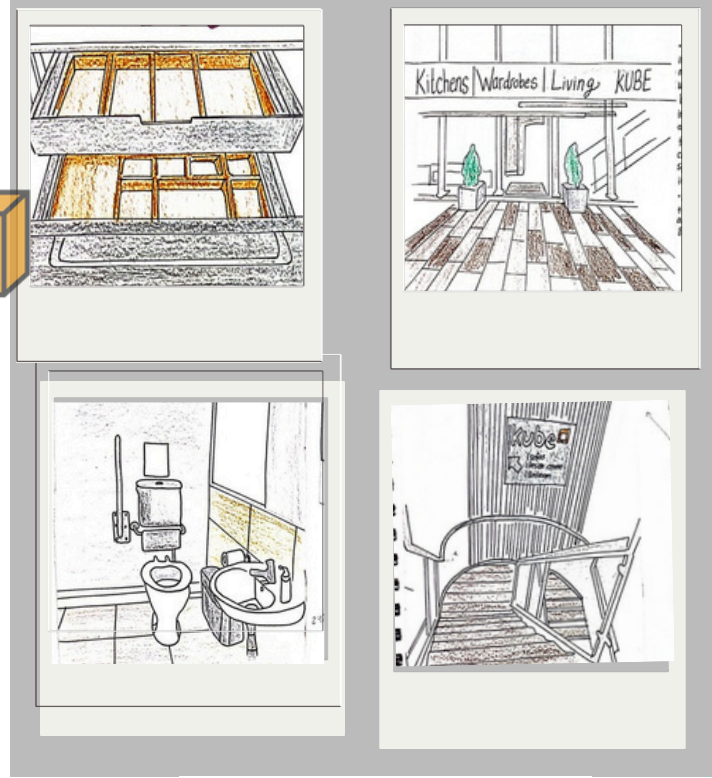
Hand Drafting



DETAIL PERSPECTIVE



Isometric scale-1:50



Perspective scale-1:25

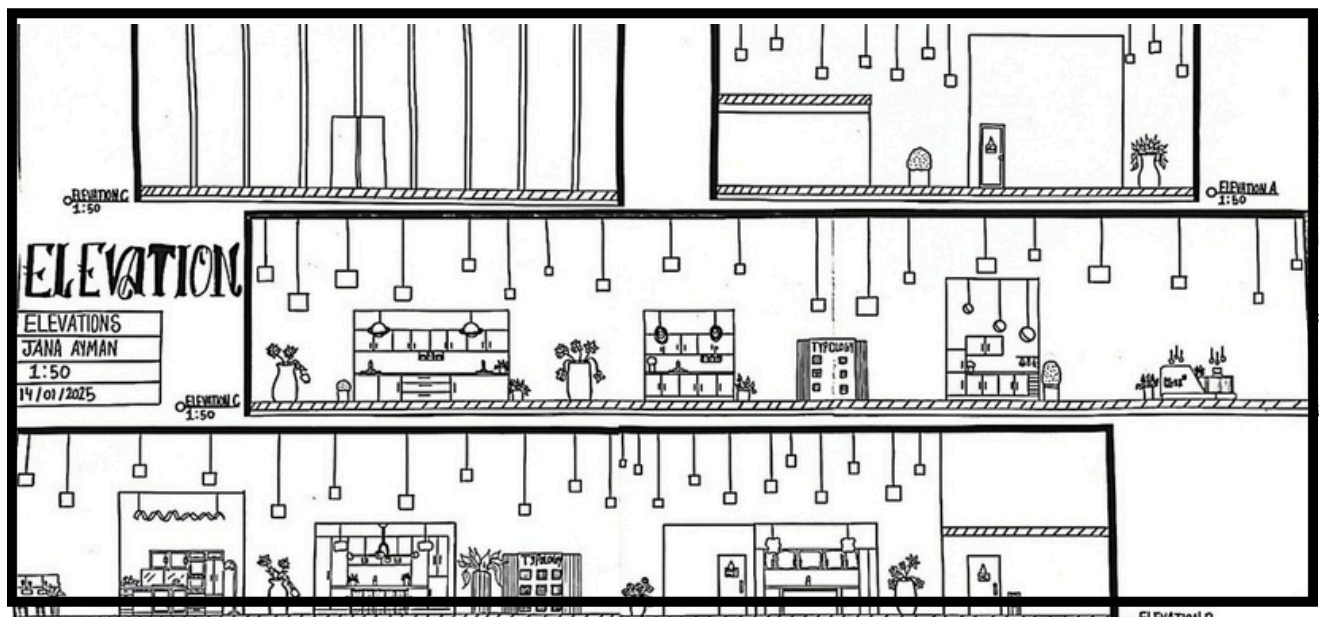


A Long Section scale-1:50

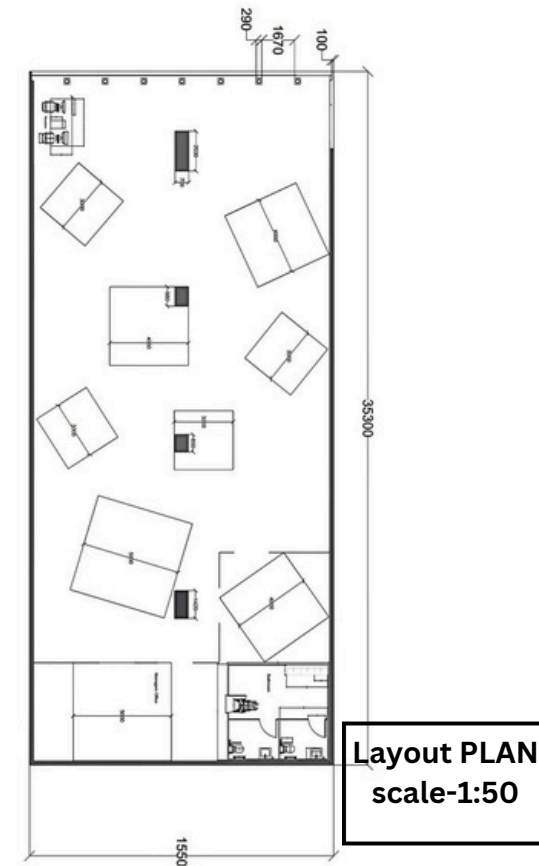
Elevation B scale-1:50

Elevation C scale-1:50

Elevation D scale-1:50

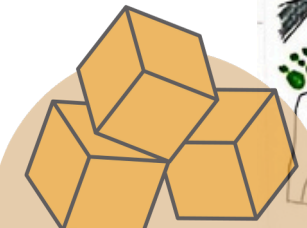
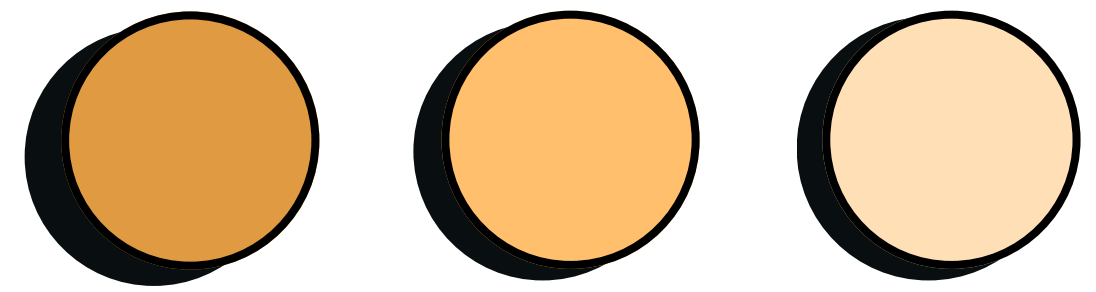
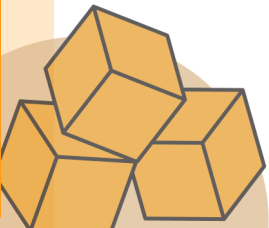
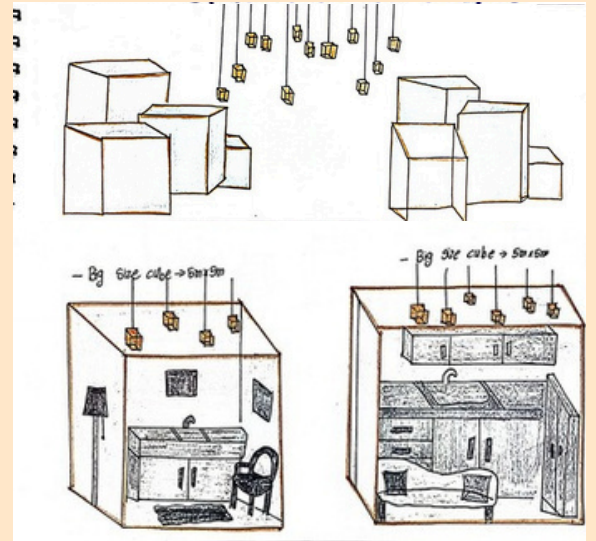
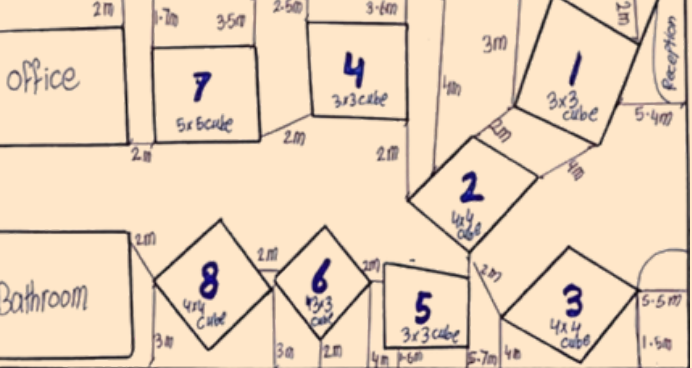


Elevation A scale-1:50



Layout PLAN scale-1:50

Layout Plan Space dimensions



Site Research

Group work

Kitchen 1

U-shaped KITCHEN with a peninsula

Material → Brass/Gold Finish with Glass spheres
 → the lights add a sophisticated focal point to the kitchen.



2. Cabinets:
 Materials - Matte painted wood



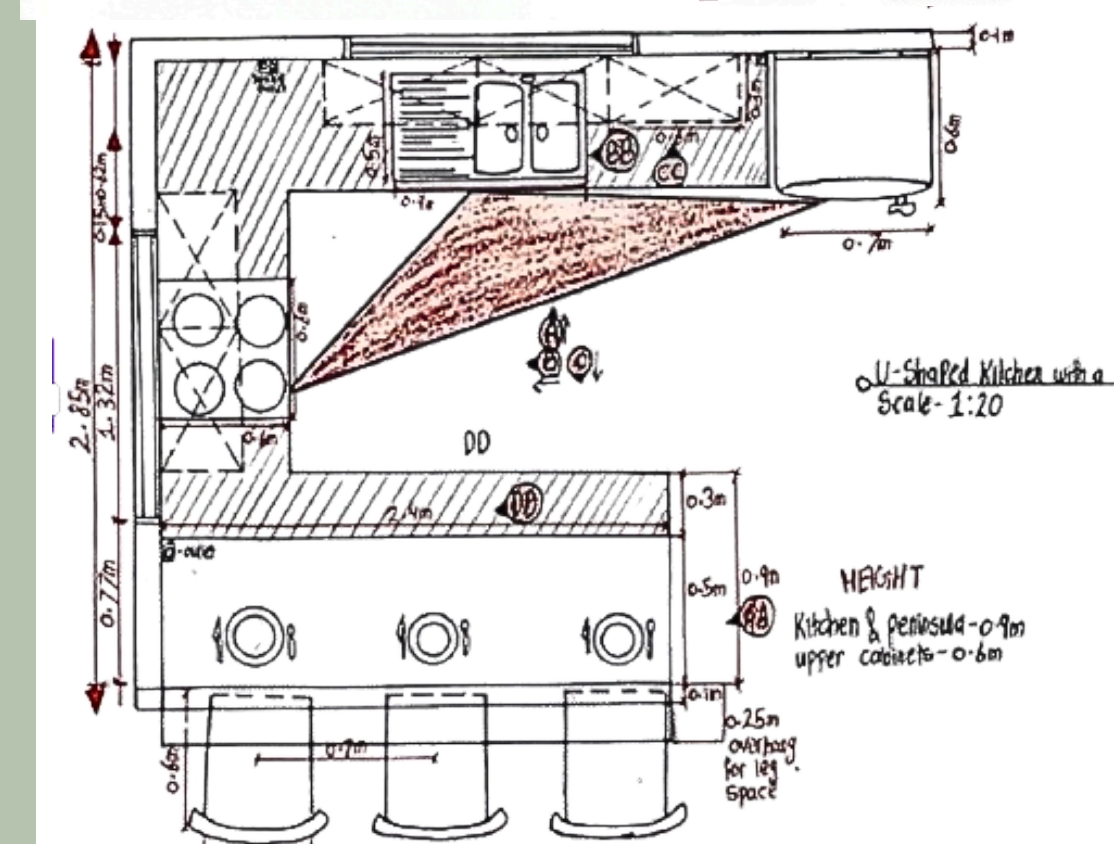
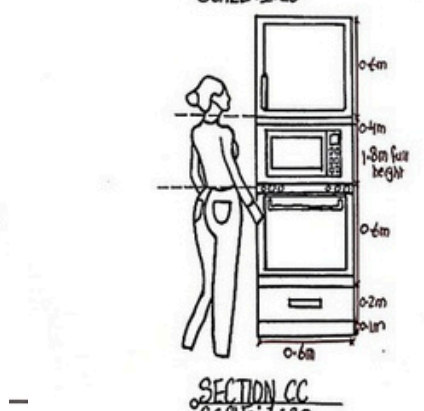
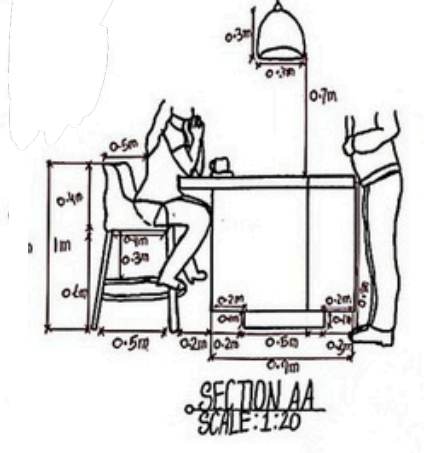
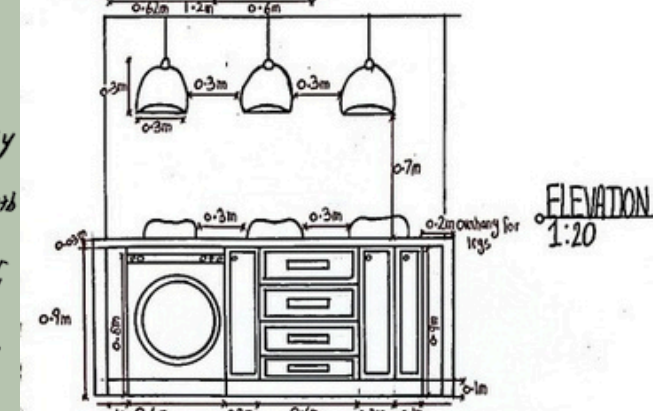
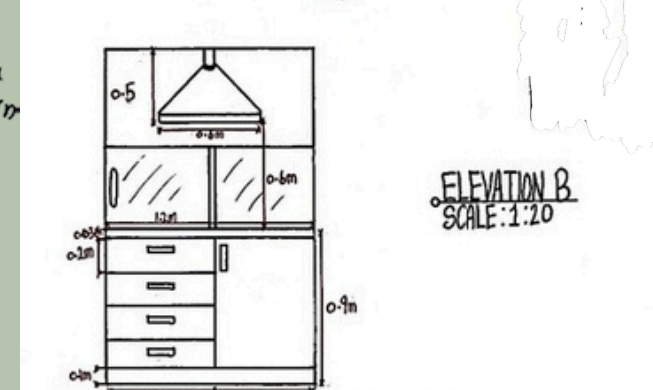
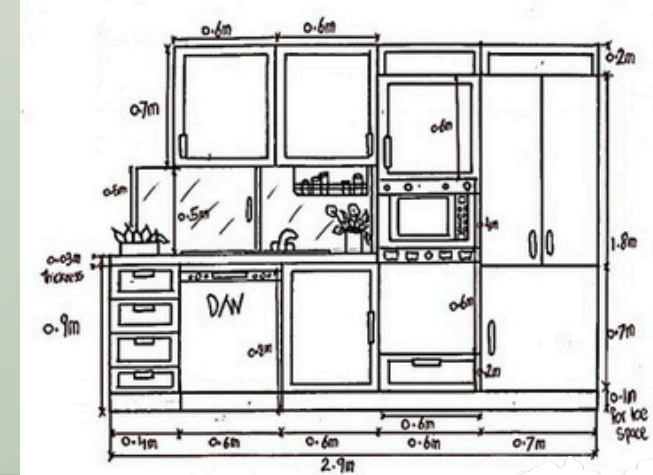
3. Fridge
 → the fridge has a sleek, stainless steel finish with a minimalist, integrated design



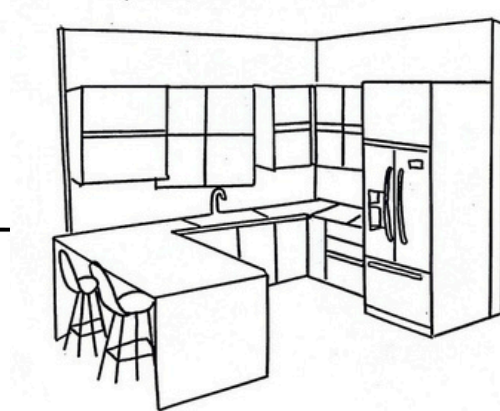
6. Wallpaper
 The wallpaper features a textured herringbone pattern with a neutral tone, adding subtle visual interest and depth to the kitchen.



5. Bar stools
 Material → velvet upholstery with metal base
 → The curved bar stools with plush Gray upholstery add comfort and elegance. Their sleek metal bases (in gold or brass) tie in with the pendant lights.



Kitchen 1
 U-shape with peninsula
 - not to scale



Final Kitchen Design
 Storage
 Lights Designs

For my kitchen design process, I focused on creating a cohesive and modern space with functional elements and bold aesthetics. The ceiling lights were a key feature, inspired by clean, geometric shapes, with options in deep blue, green, and yellow tones to add vibrancy and a touch of personality to the space. For the peninsula, I chose comfortable, stylish chairs with earthy tones. The fridge and sink are sleek and minimalist, seamlessly blending into the design while maintaining functionality. The cabinets were designed in a striking green finish, creating a bold contrast against the backsplash, while keeping the space grounded and fresh.

Materials & Finishes Selection
 For Kitchen 1 (U-shaped with Peninsula), I selected a polished quartz countertop in light grey with a matte finish for durability and ease of maintenance. The splashback features a chevron-patterned ceramic tile in white and grey with a glossy finish to enhance light reflection. The cabinet doors are laminated MDF in matte forest green, paired with brushed brass bar handles for a modern yet elegant look. The flooring is light oak wood in a herringbone pattern, adding warmth and texture to the space.



Materials

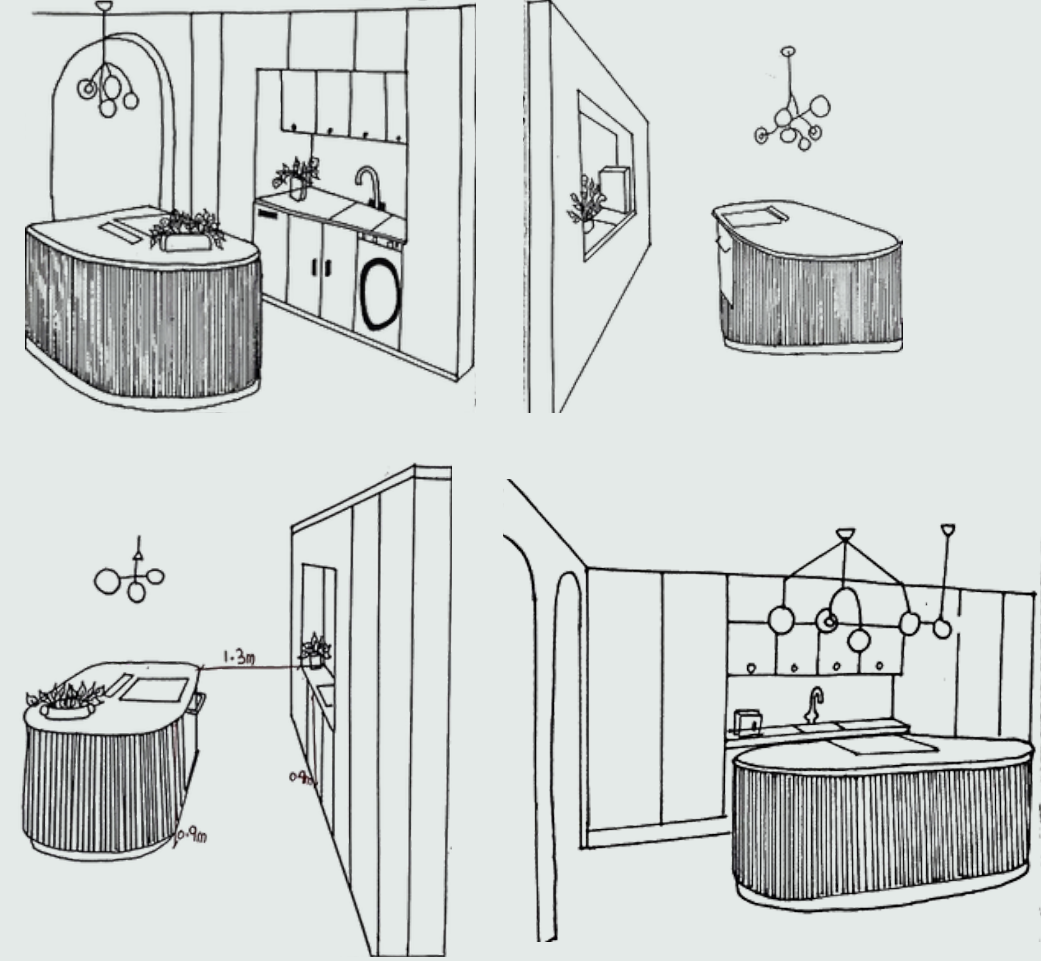
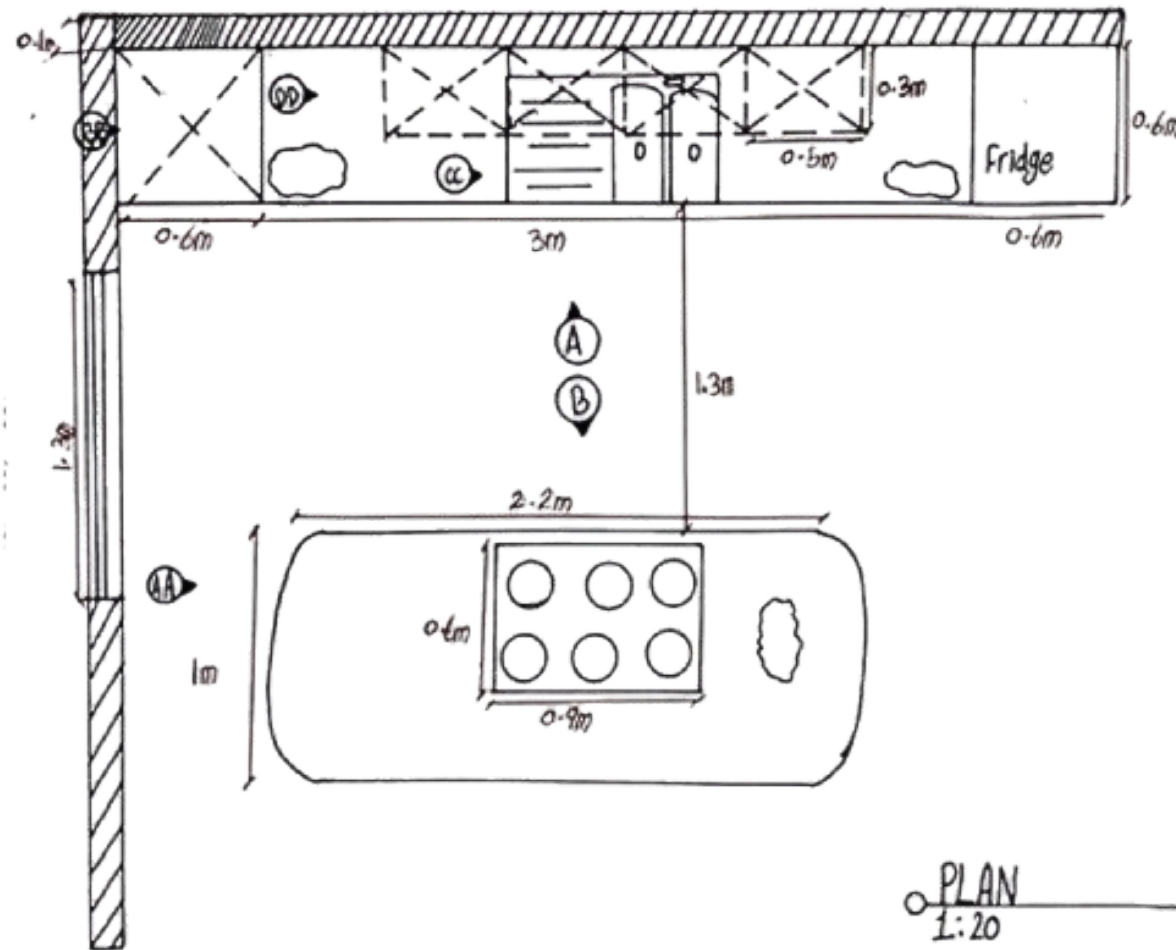
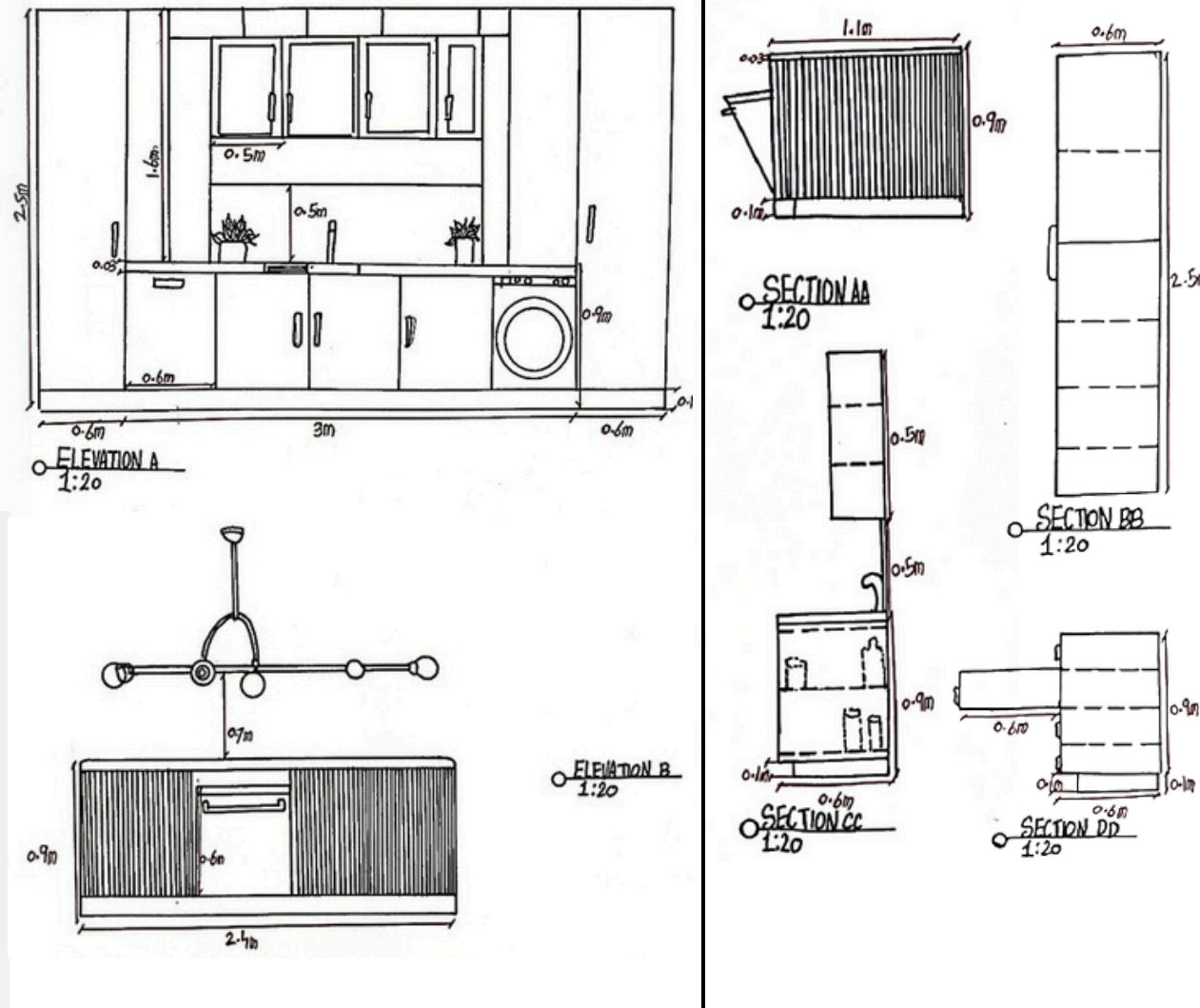
KITCHEN 2

Galley Kitchen with an Island

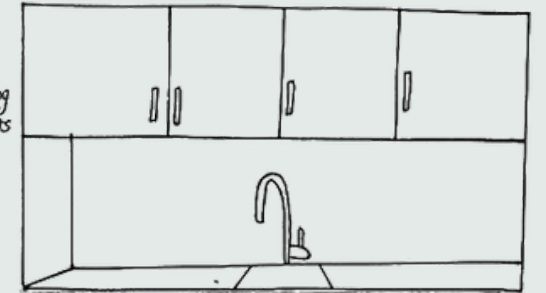


Materials & Finishes Selection

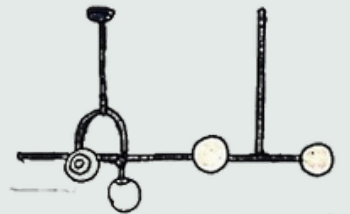
For Kitchen 2 (Galley Kitchen with an Island), I selected a terrazzo countertop for a modern and durable surface, paired with a smooth concrete splashback for a minimalist aesthetic. The cabinet doors feature light wood laminate with a natural finish, complemented by matte black handles for a sleek contrast. The island is finished with vertical wood paneling, adding texture and warmth to the space, while the overall design blends functionality with contemporary style.



The mood goal is to blend modern elegance and natural warmth. The clean-lined kitchen counter ensures functionality, while suspended globe lighting adds a soft, inviting ambiance. Lush plants bring freshness, and the geometric floor pattern introduces subtle visual interest. The textured, curved island becomes the centerpiece, balancing practicality and charm.



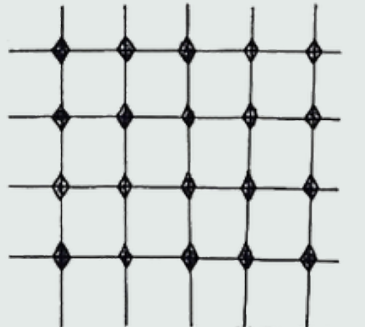
LIGHTING



PLANTS



FLOOR DESIGN



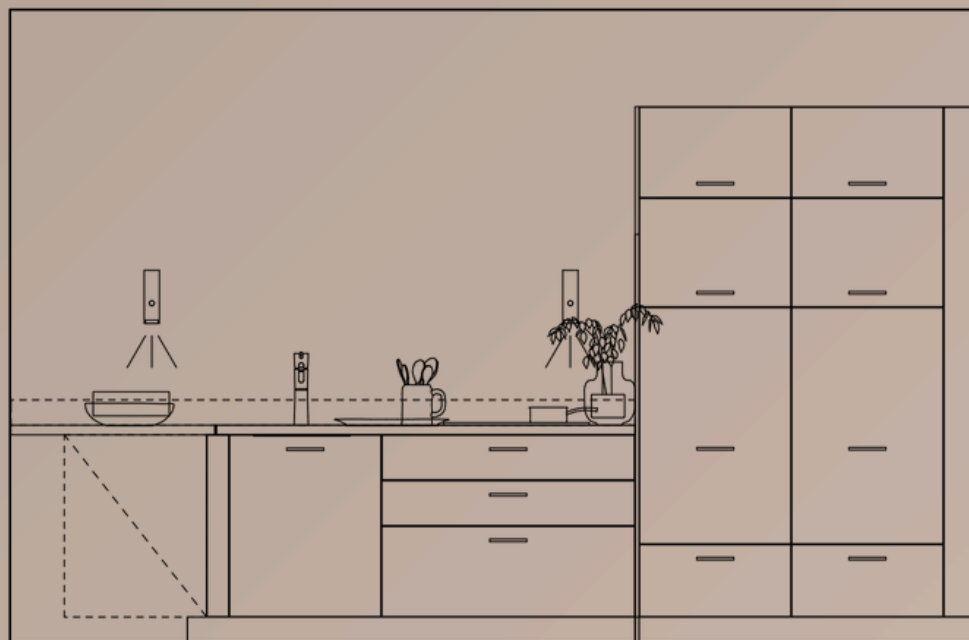
ISLAND

The mood goal is to blend sophistication and approachability, making it a space both for functionality and style. The warm tones of the island and the textured finishes bring a tactile charm, while the clean, structured lines of the cabinetry provide a modern edge. The inclusion of plants and earthy colors accents adds life and freshness.

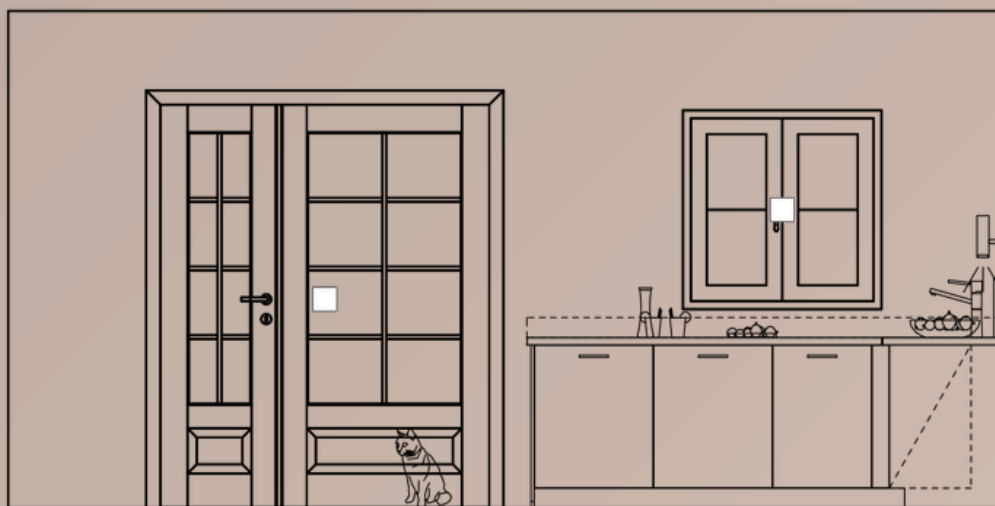


Laser

Laser Black Concrete reproduction



ELEVATION 1

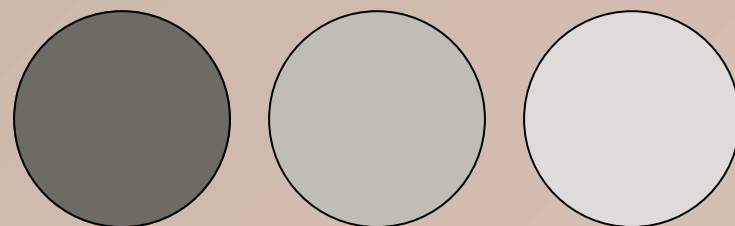
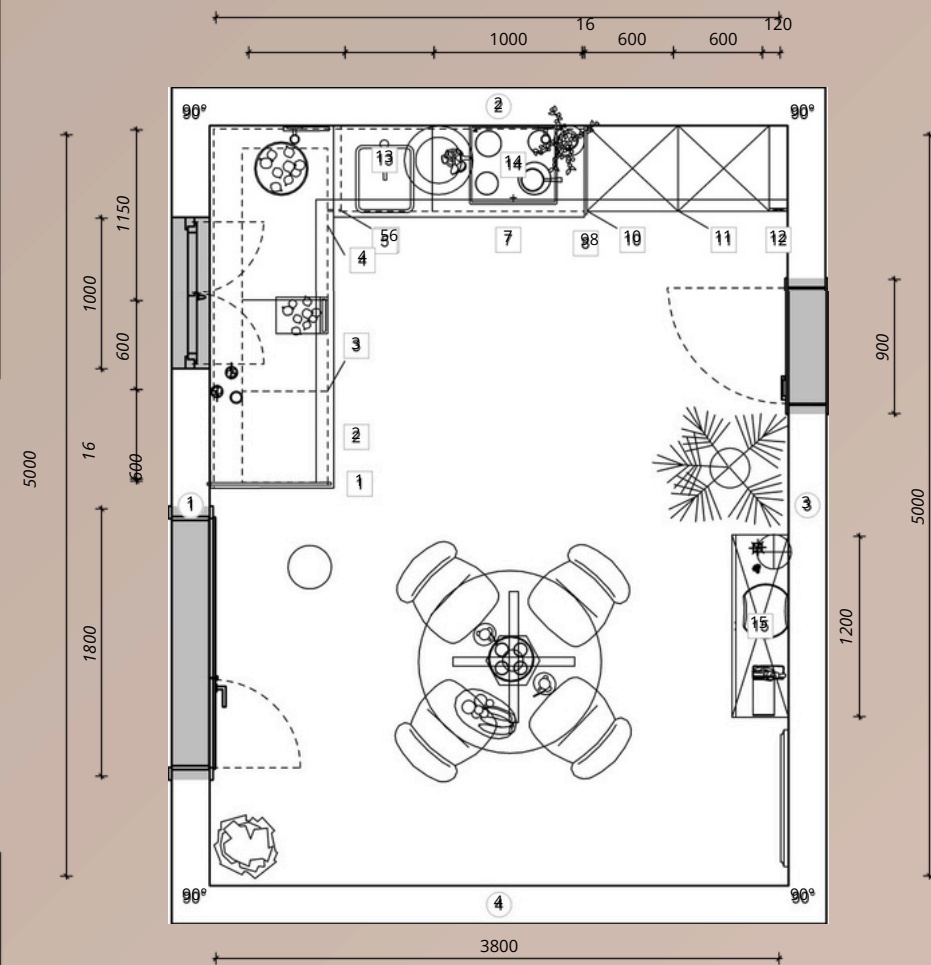


Elevation 2

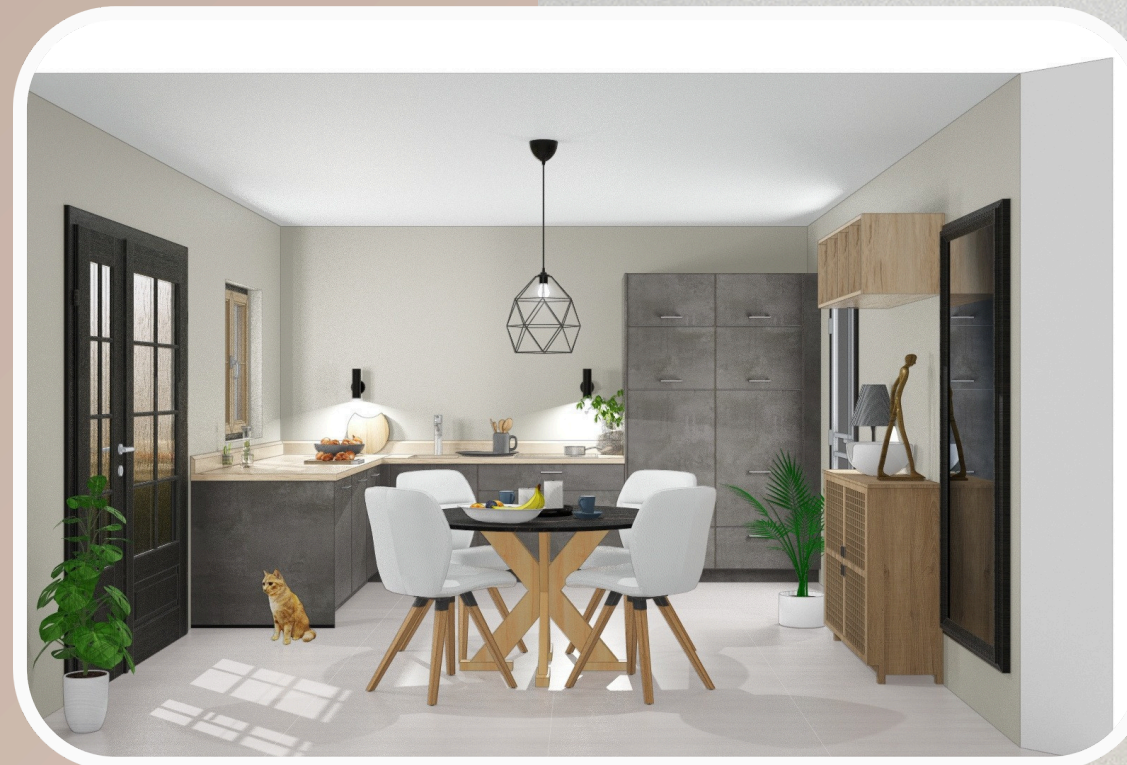
Kube internship
Summer 2025



PLAN₃₈₀₀



Perspectives



Ashtown house-visitor center

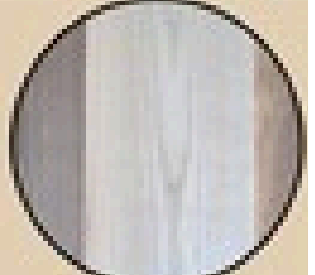
4

Year 2

Project Description

This individual project involves designing a café and exhibition space that work together seamlessly. It includes a feature staircase, a café for around 50 people with a coffee bar, kitchen, toilets, and a separate exhibition entrance, along with display areas. The focus is on creating a functional, cohesive, and visually appealing design.

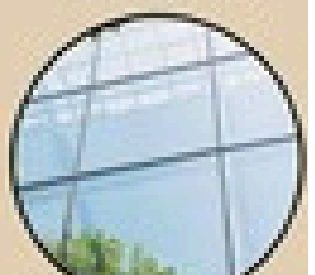
Materials



Ash Wood



Oak Wood



Sustainable Low-E Glass



Backlit Textured Glass



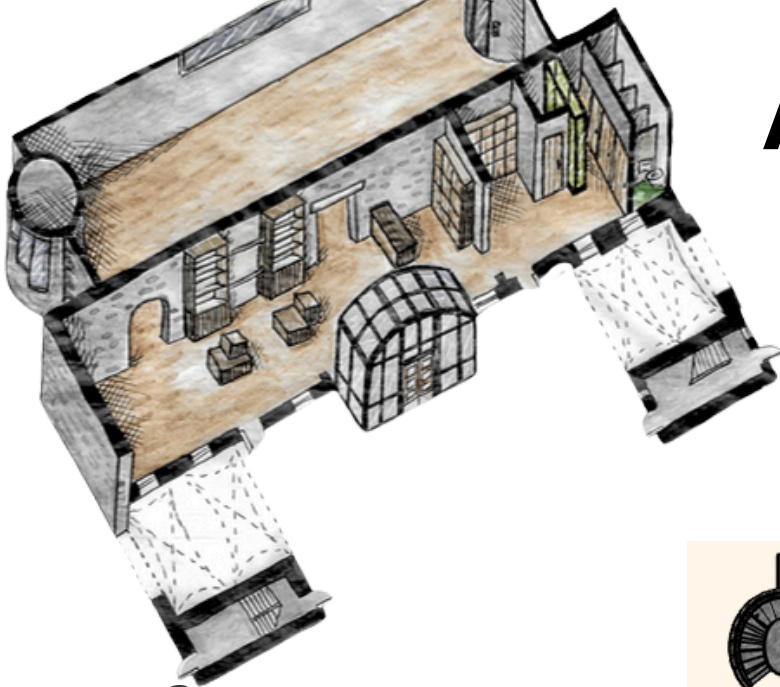
Stacked Stone Veneer Limestone



black steel bars

Ashtown House-Visitor Center

Sketchup views



Concept



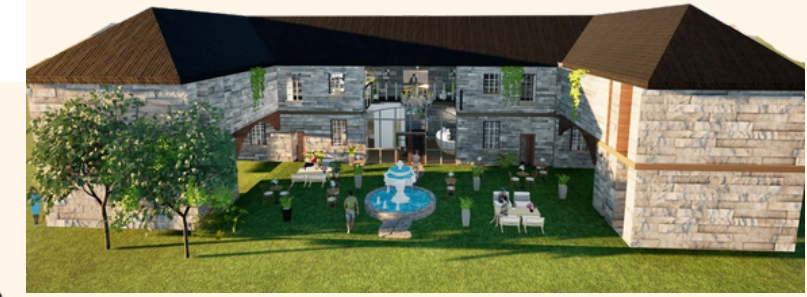
Reception desk Perspective view



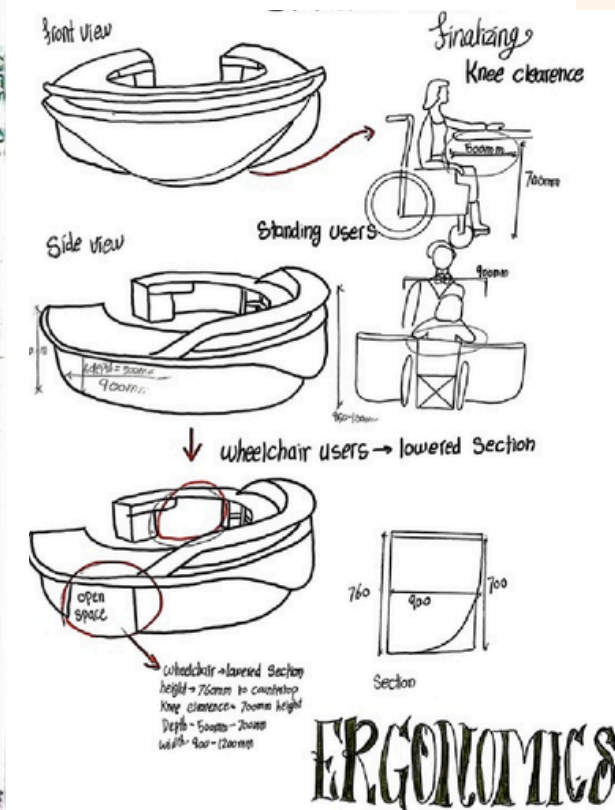
Ground Floor plan



First Floor Plan



Bathroom Perspective view



ERGONOMICS

Container Project

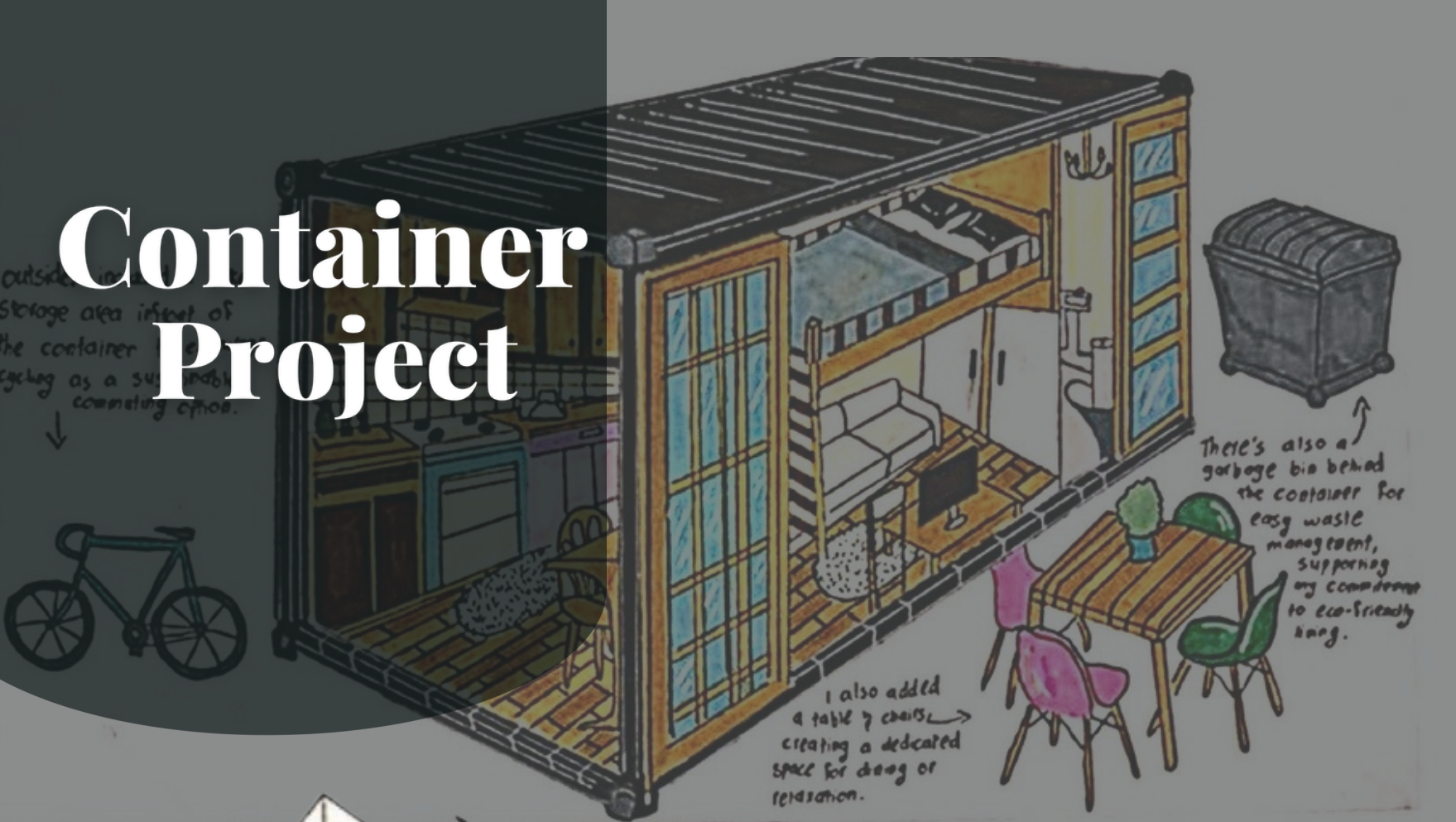
Year 2

5

Project Description

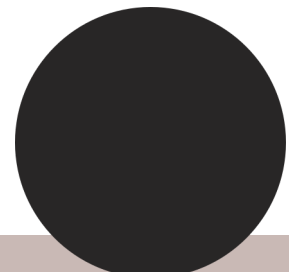
This individual project involved designing a container home that is both functional and comfortable. It included choosing a suitable site, creating a design persona, and developing a clear concept and mood. The design focused on layout, materials, lighting, and sustainability to turn a compact space into an efficient and visually appealing home.

Container Project



CONCEPT

The concept of this container home focuses on a modern design style that blends sleek furniture, contemporary colors, and natural elements to create a comfortable and inviting living space. The design emphasizes bringing the outside in by incorporating greenery, natural light, and organic materials, fostering a strong connection with nature. The layout and furnishings are tailored to offer functionality and comfort, making the space ideal for a student. It provides dedicated areas for study, relaxation, and social interaction while maintaining a fresh, modern aesthetic that encourages productivity and well-being.



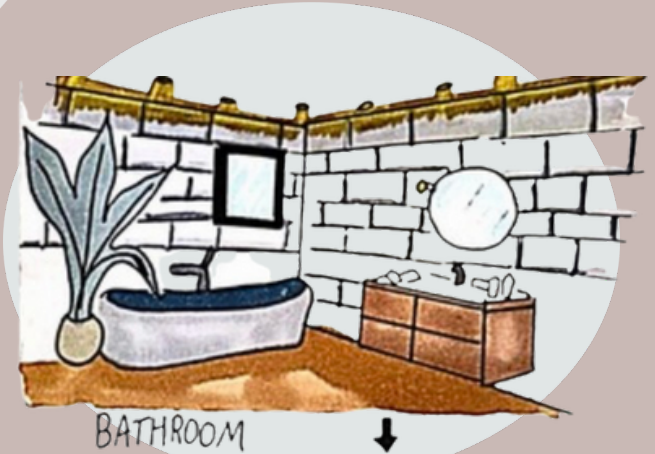
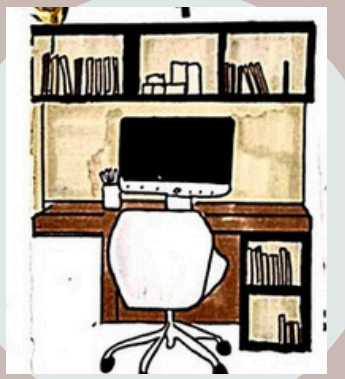
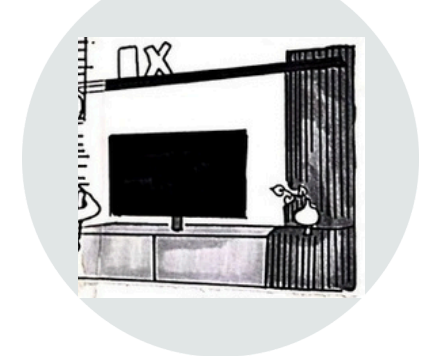
#282626



#B2A593



#E8E8E8



Concept-Design



Model



Container model



Front view



Student accommodation model



Plan view



This presentation features two models: the first is a student accommodation model designed using stacked containers to maximize space, functionality, and comfort for student living. The second is a detailed container interior model showcasing a cozy and sustainable living space, integrating natural elements, modern furniture, and efficient design to create a comfortable and inviting home environment.